

Conduct of the examinations

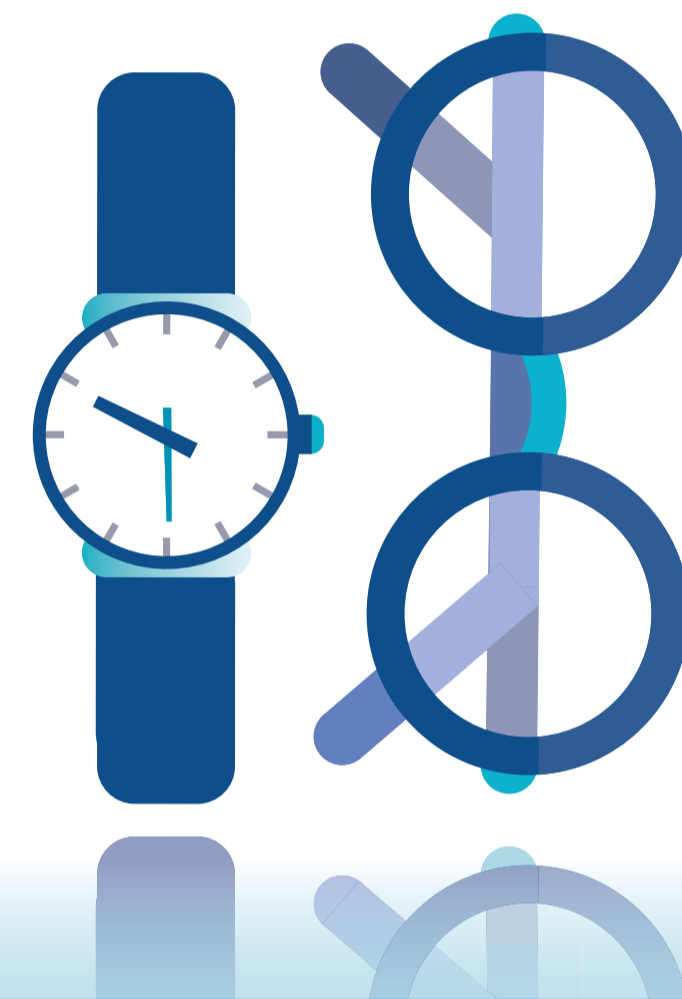
Items not permitted

If you take any of the following items into an IB examination - *even by mistake* - you will be in breach of regulations and may not be eligible for a grade in the subject being examined. If you do not understand these instructions, please contact your coordinator.



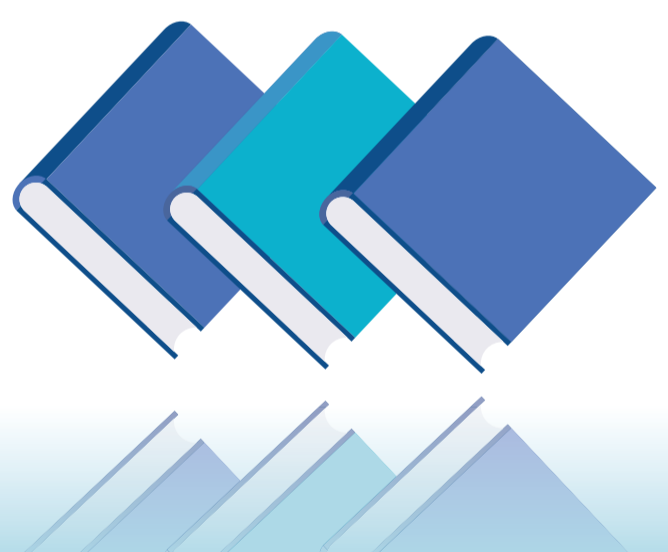
Electronic equipment

An approved calculator or personal CD player is permitted in certain examinations.



Wearable technology

Note that this includes, but is not limited to, smart watches, smart glasses, and wireless headphones.



Books or guides



Rough/scratch paper or notes



Refreshments

Water is permitted at the discretion of the coordinator.